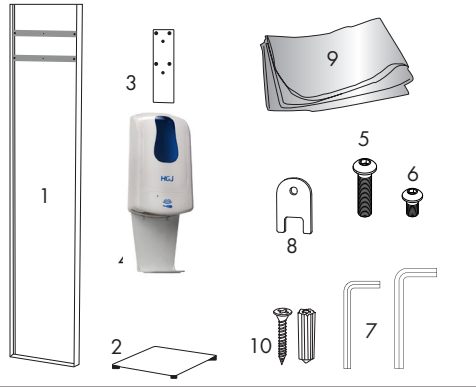


Impress Sani-Station Tower

Product Parts

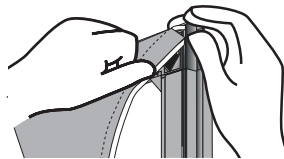
1. Frame
2. Base
3. Backer Plate
4. Touch-Free Sanitizer
5. M6x1.0 Screw (x2)
6. M5x0.8 Screw (x2)
7. #3 & #4 Hex Wrench
8. Key
9. Graphic (x2)
10. Mounting Hardware (x4 ea)
(Not for mounting to Display)



Display Set-Up

Step 1

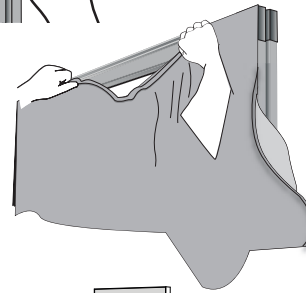
On a clean flat surface lay Frame (1) down and install back Graphic (9)-(without holes) into each corner. The Graphic (9) fits into the frame by inserting gasket into the frames channel. Once each corner is secure, work towards the center on each side using your thumbs to smooth the gasket.



To remove the graphics, pull loop found on corner.

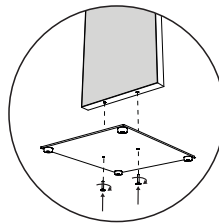
Step 2

Flip Frame (1) over and repeat for front Graphic (9)-(with holes).



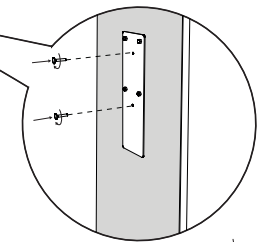
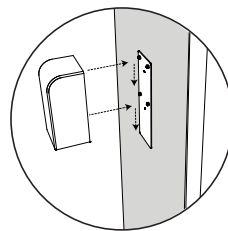
Step 3

Attach Frame (1) to Base (2) with the two M6x1.0 Screws (5) and tighten with #4 Hex Wrench (7).



Step 4

Align holes in Backer Plate (3) with holes through front Graphic and and mount Backer Plate (3) to Frame (1) using the two M5x0.8 Screws (6). Tighten with #3 Hex Wrench. Mount Touch-Free Sanitizer (4) to pins on Backer Plate (3).



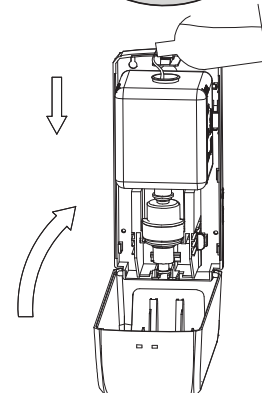
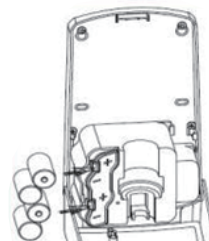
Touch-Free Sanitizer Set-Up

Step 1

Use the Key (9) to press down on tabs to unlock front cover. Insert four AA sized batteries (**NOT INCLUDED**).

Step 2

Remove cap from liquid reservoir and fill with your favorite hand sanitizer (**NOT INCLUDED**). Replace cap and close front cover.



Storage & Care

Place display parts in Carry Case (included) and store in a cool dry location. Recommended for indoor use only. Machine wash on gentle cycle using mild detergent. Tumble Dry Low Heat. Do NOT dry clean, Do NOT iron.

DO NOT USE homemade formulas of sanitizer. For further guidance on sanitizer solutions go to <https://www.fda.gov/media/136289/download> the FDA's guidance on sanitizer products.